

# Gouging torches K10 / K12 / K16 according to DIN EN 60 974-11 Type B



Technical data see below:

For electrical arc gouging.

Gouging torches made by KURT HAUFE can be used safely and easily for gouging, joint preparing, removing of pores and cracks, cutting and hole piercing to all metals.

In particular, they are distinguished by:

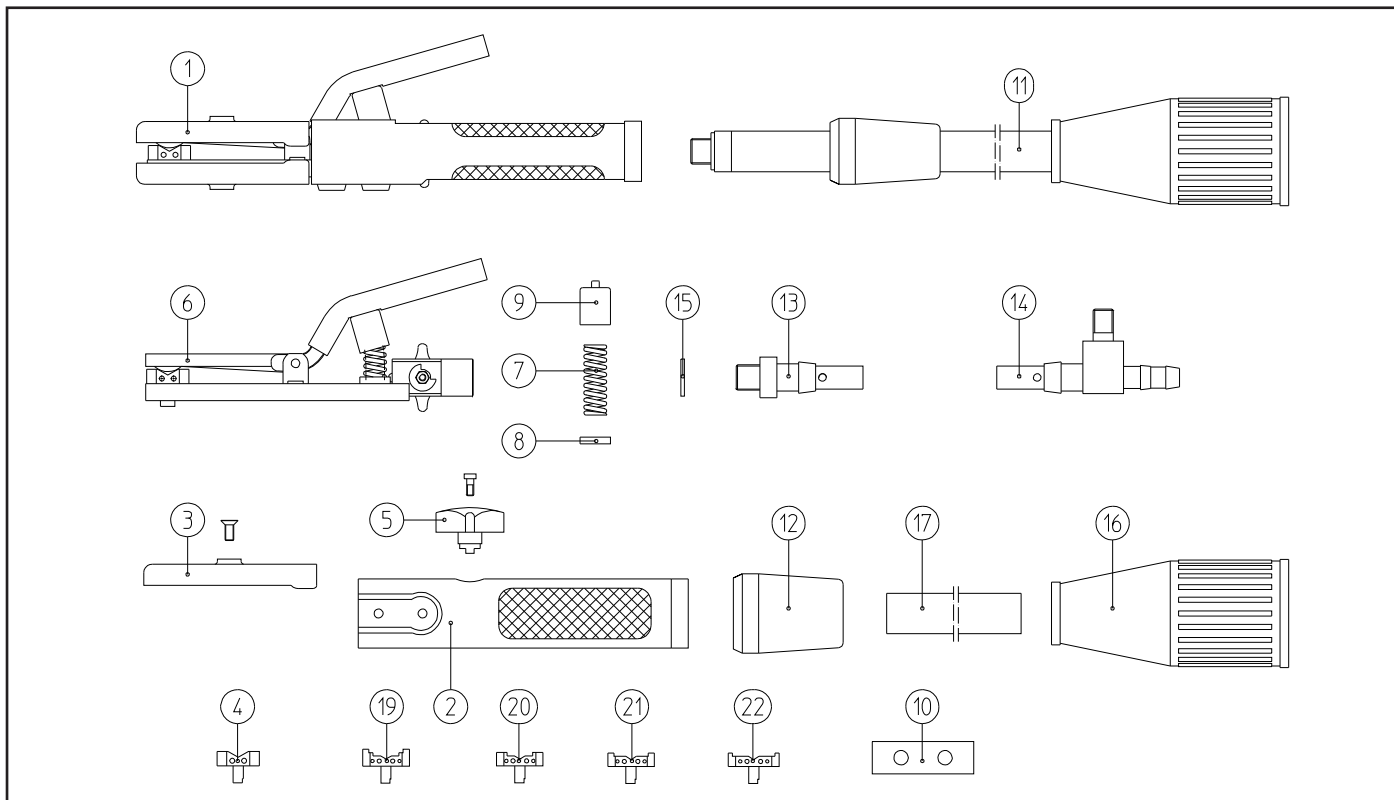
- the oval, mechanical strong and thermal insulating handle
- the tumbable nozzle, applicable for cylindrical and flat carbon electrodes
- the opportunity for air stream control by integrated valve
- the high flexible special cable

Type	Rating at 60% duty cycle	Cilindrical electrode (mm)	Flat electrode width (mm)	Flat electrode thickn. (mm)	Connection for welding cable	Compr. air max. (bar)	Length (m)	Air main inner dia. (mm)	Part no.
<b>K10</b>	500 A	4 - 10	15/20	4	M8	10	3,00	6	516.D001
<b>K12</b>	600 A	4 - 12	15/20	4 - 5	M10	10	3,00	10 - 11	516.D002
<b>K16</b>	1000 A	8 - 16	15/20/25	4 - 5	M12	10	3,00	10 - 11	516.D003

The admission of the „Deutsche Bahn“ (german railway) is given.

Welding & cutting brought to the point.





Pos.	Description	K10	K12	K16	Part no.
1	Gouging torch without hollow cable	X	X		516.D028
				X	516.D040
2	Handle	X	X	X	516.D011
3	Insulating jaws	X	X		512.D091
				X	516.D042
4	Nozzle (for cylindrical electrode)	X	X		516.D026
				X	516.D044
5	Cross switch	X	X	X	516.D012
6	Front part compl.	X	X		516.D027
				X	516.D041
7	Pressure spring	X	X	X	516.D013
8	Cap	X	X	X	512.D036
9	Insulating cap	X	X	X	512.D039
10	Insulating plate	X	X	X	512.D032
11	Hollow cable	X			516.D050
			X		516.D018
				X	516.D048
12	Handle extension			X	516.D049
13	Connecting piece	X			516.D051
			X		516.D022
				X	516.D043
14	Connecting piece with screw	X			516.D052
			X		516.D019
				X	516.D047
15	Sealing (Selling unit 10 pcs.)	X	X	X	516.D053
16	Insulating sleeve	X			516.D054
			X	X	516.D020
17	Special pipe, lgth. 3070	X			516.D055
			X	X	516.D021
19	Flat nozzle 15/20	X	X	X	516.D023
20	Flat nozzle 15	X	X	X	516.D024
21	Flat nozzle 20	X	X	X	516.D025
22	Flat nozzle 25			X	516.D045

Subject to change without notice. • Guarantee for Genuine KURT HAUFE spares only.

## KURT HAUFE

Schweißtechnik GmbH & Co. KG  
a member of the **ABICOR** group

Altölbau 9, P.O. Box 28 01 38

D-01142 Dresden

Tel.: ++49 (0) 3 51 / 42 03 30

Fax: ++49 (0) 3 51 / 42 03 34 0

e-mail: haufe@binzel-abicor.com

Internet: www.binzel-abicor.com