

# Plasma cutting torch ABIPLAS® CUT MT 110



**The plasma  
cutting torch  
for all  
individual tasks**

Machine cutting torches ABIPLAS® CUT are applicable for plasma cutting with compressed air used both as plasma and cooling gas in all usual cutting jobs.

Due to the large range of nozzles and electrodes as well as different accessories these torches can be used in a wide field of application.

#### Technical data according to EN 60 974-7:

Rating:	<b>110 A at 60 % duty cycle</b> 90 A at 100 % duty cycle
Gas supply:	Compressed air both for plasma and cooling gas Gas pressure 4.8 - 7 bar Working pressure 5.5 bar Required volume 180 l/min at 5.5 bar Gas post flow: ca. 60 sec
Ignition voltage:	7 kV
Cutting thickness:	max. 40 mm at 110 A max. 35 mm at 90 A depending on material to be cut and power source

Type	Description	Part N°
<b>ABIPLAS® CUT MT 110; 6 m, SC G<sup>1</sup>/<sub>4</sub> rubber cable support</b>	Machine cutting torch with single connector with rubber cable support	745.D035
<b>ABIPLAS® CUT MT 110; 6 m, SC G<sup>1</sup>/<sub>4</sub> spring cable support</b>	Machine cutting torch with single connector with spring cable support	745.D049
<b>ABIPLAS® CUT MT 110; 6 m, CC rubber cable support</b>	Machine cutting torch with central connector*) with rubber cable support	745.D059
<b>ABIPLAS® CUT MT 110; 6 m, CC spring cable support</b>	Machine cutting torch with central connector*) with spring cable support	745.D060

In case of order, please indicate the plug encoding.

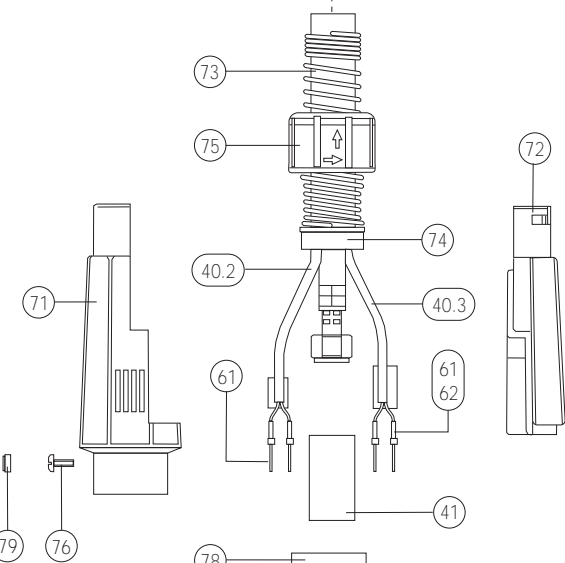
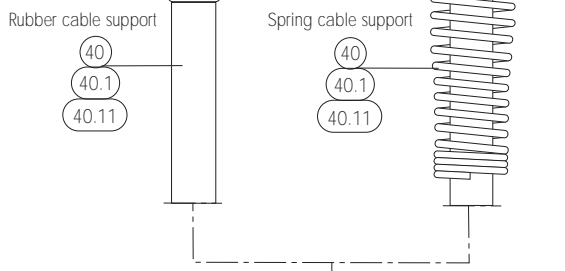
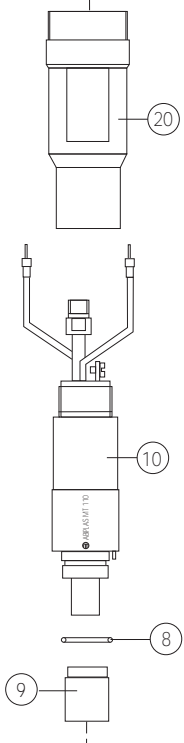
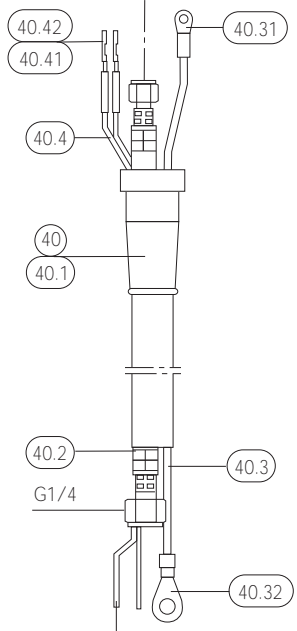
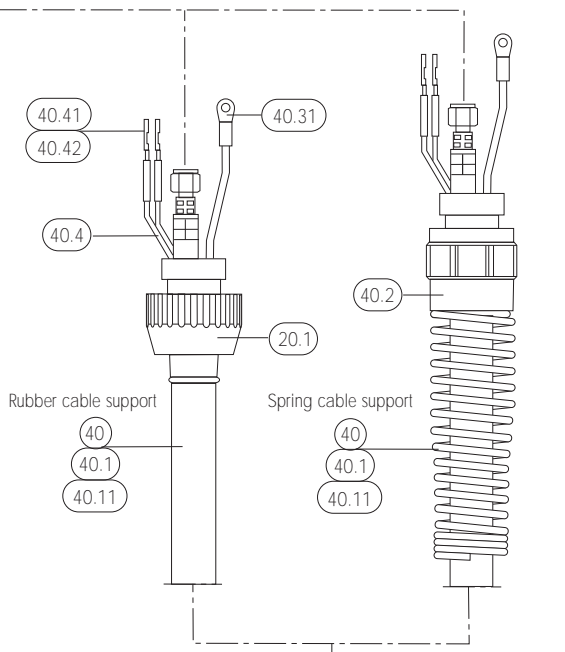
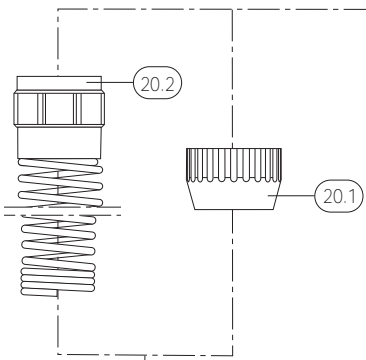
\*) For user's safety, please pay attention that the power source is equipped with a central socket corresponding to EN 50 192.

Welding and cutting brought to the point.

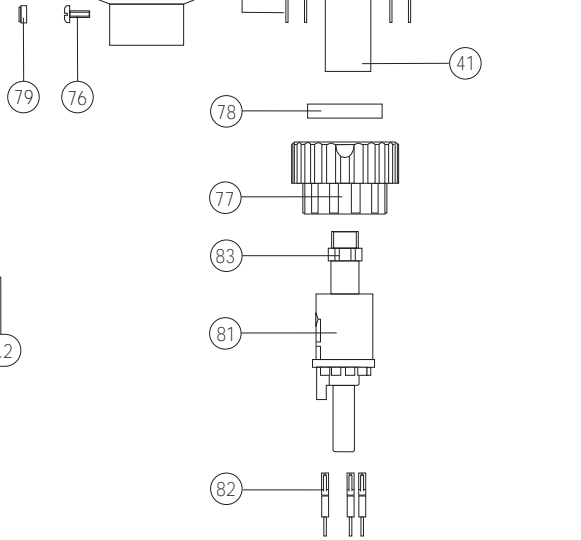
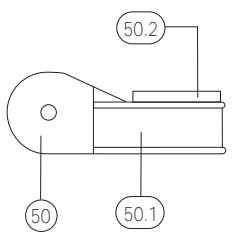
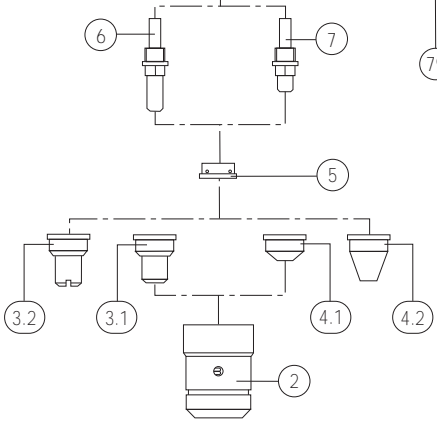
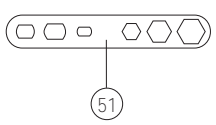


Single connector

Single connector



Control power source externally.  
Safety circuit corresponding to  
machine configuration.



Components	Pos.	Description	Specifications	Part N°
<b>Consumables</b>	2	Shield cap		745.D026
	3.1	Nozzle long D=1.2/50 A	5 pcs.	745.D066
	3.2	Nozzle cross groove long, D=1.2/50 A	5 pcs.	745.D068
	4.1	Nozzle D=1.0/30-50 A	5 pcs.	745.D018
		Nozzle D=1.2/40-70 A	5 pcs.	745.D010
		Nozzle D=1.4/70-90 A	5 pcs.	745.D017 •
		Nozzle D=1.6/90-110 A	5 pcs.	745.D065
	4.2	Gouging nozzle	5 pcs.	745.D067
	5	Swirl ring ABIPLAS® 110	2 pcs.	745.D009
	6	Electrode long	5 pcs.	745.D016
	7	Electrode	5 pcs.	745.D008 •
	8	O-ring	5 pcs.	165.D013
	9	Insulator		745.D020
			• standard completion - Marking of nozzles: 11/xx = ABIPLAS® CUT 110/nozzle diameter	
<b>Torch body</b>	10	Torch body ABIPLAS® MT 110 (pos. 10 includes pos. 8 and 9)		745.D051
<b>Handle tube</b>	20	Handle tube MT		752.0311
	20.1	Cap nut		400.0137
	30	Cable support spring		500.0234
<b>Cable assembly - single connector G<sup>1</sup>/<sub>4</sub></b>	40	Cable assembly MT 110 SC		745.D058
	40.1	Outer cover		107.D004
	40.2	Power-air-cable		116.D003
	40.3	Pilot wire per m		100.0074
	40.31	Cable eye for M4	20 pcs.	175.D045
	40.32	Cable eye for M6	20 pcs.	175.0039
	40.4	Trigger wire double-pole, per m		100.0019
	40.41	Cable eye	20 pcs.	175.0033
	40.42	Insulating sleeve	20 pcs.	400.0119
<b>Cable assembly - central connector</b>	40	Cable assembly MT 110 CC, rubber cable support		745.D078
		Cable assembly MT 110 CC, spring cable support		745.D080
	40.1	Outer cover		107.D004
	40.11	Outer cover (cpl. incl. pos. 20.1, 40.1, 73, 74, 75)		107.D011
	40.12	Outer cover (cpl. incl. pos. 20.2, 40.1, 73, 74, 75)		107.D013
	40.2	Power-air-cable		116.D003
	40.3	Pilot wire per m		100.0074
	40.31	Cable eye for M4	20 pcs.	175.D045
	40.4	Trigger wire double-pole, per m		100.0019
	40.41	Cable eye	20 pcs.	175.0033
	40.42	Insulating sleeve	20 pcs.	400.0119

Components	Pos.	Description	Specifications	Part N°
	61	Contact pin	20 pcs.	243.0053
	62	Stranded wire single-pole, per m		100.D001
	71	Cable support case, small		500.0216
	72	Cable support cover		500.0217
	73	Cable support spring ERGO dia. 21		500.0343
	74	Strain relief ERGO		400.0412
	75	Seal ring dia. 31		400.0297
	76	Cylindrical screw M4x6	20 pcs.	000.0552
	77	Connector nut M32x2		501.2250
	78	Intermediate ring		771.0502
	79	Cap 2	20 pcs.	500.0362
	81	Adapter		243.0050
	82	Sleeve		243.0054
	83	Hexagonal nut G <sup>1</sup> / <sub>4</sub>		243.0051

### Accessories

41	Set of shrink hoses (required when replacing pos. 10, 40, 40.xx)		742.D021
50	Mounting complete		745.D052
50.1	Clamp		836.0006
50.2	Clamp sleeve ø 31		745.D053
51	Multiple wrench		191.0001

### Connectors

Connection adapters for differing machine connectors are available upon request.

### Lengths

Standard length 6.0 m; other lengths available upon request.

### Safety circuit

For safety reasons, the trigger wire connectors on machine side for torches with single connector are delivered without connecting plug.

The safety circuit depends on machine configuration and shall be observed in any case.

Welding and cutting brought to the point.



Alexander Binzel Schweisstechnik GmbH & Co. KG  
 Postfach 10 01 53 · D-35331 Gießen  
 Tel.: ++49 (0) 64 08 / 59-0  
 Fax: ++49 (0) 64 08 / 59-191  
 Internet: www.binzel-abicor.com

