

**MIG/MAG  
Welding Torch  
System  
ROBO WH 241 D  
ROBO WHPP 241 D  
liquid cooled**



**BINZEL. The right welding torch for every job.**

The welding torches belonging to this range of products are used for automatic arc-gas welding using both inert and active gases. They have a universal application and are suitable for all welding positions.

The standard unit is a water-cooled neck either straight or with a 22° or 45° bend with WH torch body, cable assembly with integral airblast hose and central adaptor for connection to the machine.

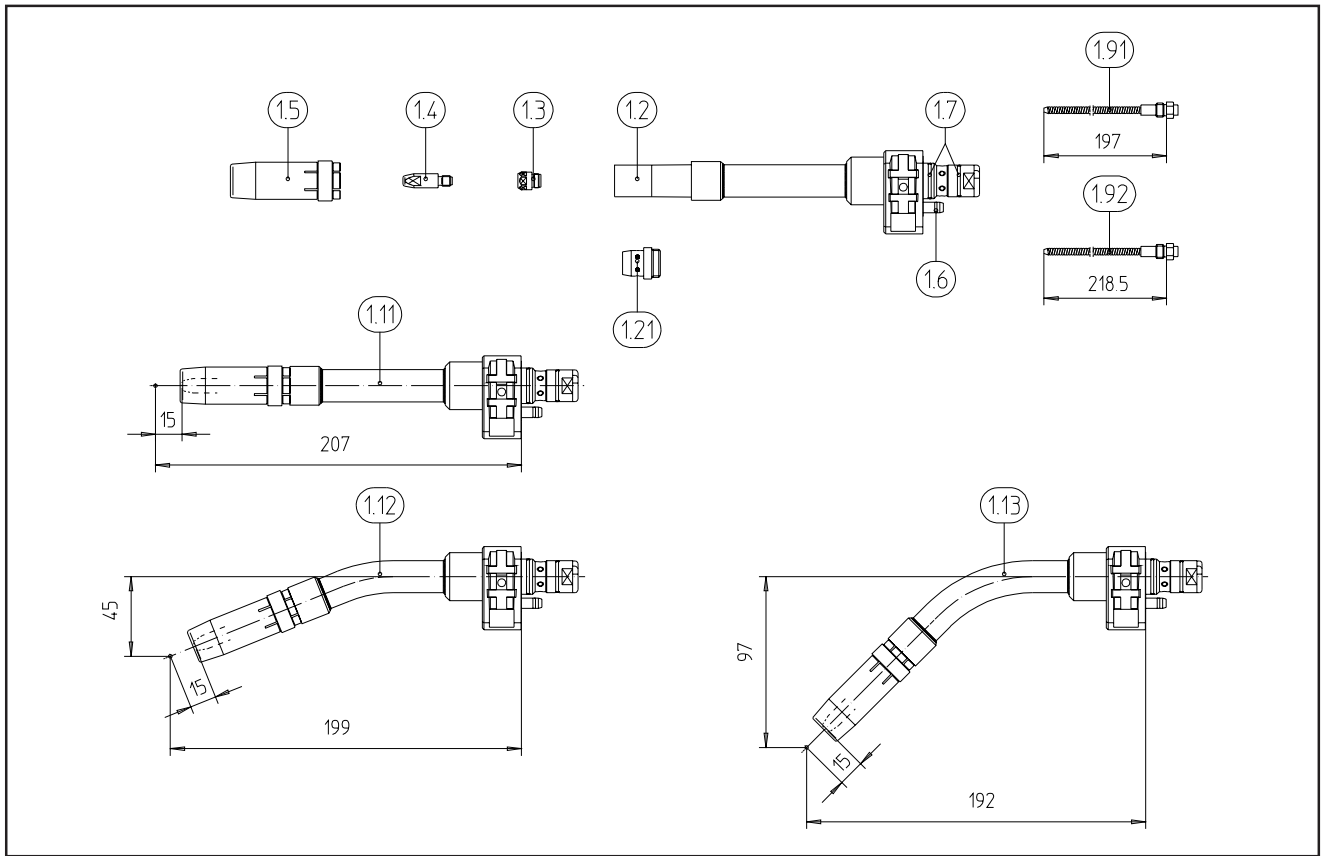
**Technical data (EN 50 078):**

Quick Change Neck WH 241 D  
Rating: 320 A CO<sub>2</sub>  
280 A mixed gases M21 (DIN 32 562)  
100% duty cycle  
Wire sizes: 0.8-1.2 mm  
Motor: up to 42 V DC  
Gearbox: i=17, 1:1 standard, different motor/gearboxes to special order

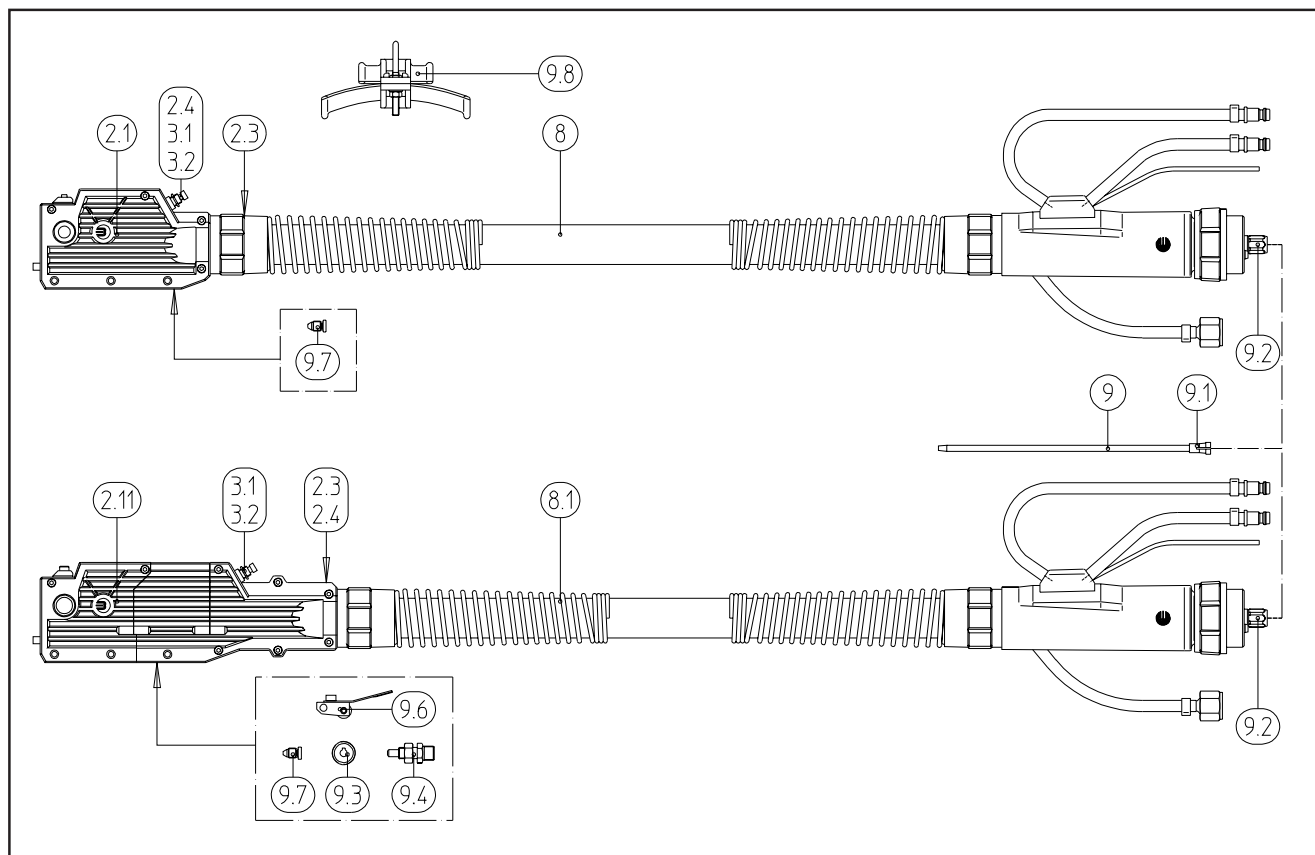
When pulse welding, reduce rating by 35%.

Welding & cutting brought to the point.





Build group	Pos.	Description	Specifications	Order-no.
<b>Quick Change Neck</b>	1.11	Swan neck ROBO WH 241 D, straight		962.0756
		Swan neck ROBO WH 241 D, sensor, straight		962.0835
	1.12	Swan neck ROBO WH 241 D, 22°		962.0757
		Swan neck ROBO WH 241 D, sensor, 22°		962.0836
	1.13	Swan neck ROBO WH 241 D, 45°		962.0758
		Swan neck ROBO WH 241 D, sensor, 45°		962.0837
<b>Wear parts</b>	1.2	Nozzle insulator (standard)	10 pcs.	146.0055
		Nozzle insulator high heat resistant	10 pcs.	146.0061
	1.21	Gas diffusor	10 pcs.	945.0039
	1.3	Tip adaptor M6-Bi 8/24, 13 mm		142.0121
	1.4	Contact tip M6 CuCrZr, Ø 0.8, 28 mm	10 pcs.	140.0054
		Contact tip M6 CuCrZr, Ø 0.9, 28 mm	10 pcs.	140.0172
		Contact tip M6 CuCrZr, Ø 1.0, 28 mm	10 pcs.	140.0245
		Contact tip M6 CuCrZr, Ø 1.2, 28 mm	10 pcs.	140.0382
		Contact tip M6 E-Cu, Ø 0.8 for alu. wire, 28 mm	10 pcs.	141.0001
		Contact tip M6 E-Cu, Ø 1.0 for alu. wire, 28 mm	10 pcs.	141.0006
		Contact tip M6 E-Cu, Ø 1.2 for alu. wire, 28 mm	10 pcs.	141.0010
	1.5	Gas nozzle NW 15.5, conical, 62 mm	10 pcs.	145.0090
		Gas nozzle NW 13.0, conical, 62 mm	10 pcs.	145.0135
		Gas nozzle NW 15.5, conical, 57 mm	10 pcs.	145.0472
		Gas nozzle NW 13.0, conical, 57 mm	10 pcs.	145.0473



Build group	Pos.	Description	Specifications	Order-no.
<b>Component parts</b>	1.6	O-ring 3.5 x 1.2 mm	20 pcs.	165.0062
	1.7	O-ring 15.0 x 1.5 mm	20 pcs.	165.0015
	1.91	Neck liner for steel wire Ø 0.8 - 0.9 mm, straight / 22°		962.0206
		Neck liner for steel wire Ø 1.0 - 1.2 mm, straight / 22°		962.0390
		Neck liner for alu. wire Ø 0.8 - 1.0 mm, straight / 22°		962.0208
		Neck liner for alu. wire Ø 1.2 - 1.6 mm, straight / 22°		962.0209
		w/o. fig. Neck Liner BPLpetrol for alu. wire Ø 0.8 - 1.2 mm, straight / 22°		962.1016
	1.92	Neck liner for steel wire Ø 0.8 - 0.9 mm, 45°		962.0222
		Neck liner for steel wire Ø 1.0 - 1.2 mm, 45°		962.0029
		Neck liner for alu. wire Ø 0.8 - 1.0 mm, 45°		962.0224
		Neck liner for alu. wire Ø 1.2 - 1.6 mm, 45°		962.0225
		w/o. fig. Neck Liner BPLpetrol for alu. wire Ø 0.8 - 1.2 mm, 45°		962.1017
<b>Cable assembly ROBO WH and ROBO WHPP</b>	2.1	Housing ROBO-WH body cpl.		960.0003
	2.11	Housing ROBO-WHPP body cpl.		961.0003
	2.3	Cable support connector		960.0022
	2.4	Panel mounted socket, 3-pole		175.0051
	3.1	Wire inch push button switch		185.0024
	3.2	Cap		185.0035

Build group	Pos.	Description	Specifications	Order-no.
<b>Cable assembly ROBO WH and ROBO WHPP</b>		w/o. fig. Component-WH, consisting of: manuel neck change tool, screw M3x10 (6 pcs.), grease, silicon free (10g)		960.0150
		Component-WHPP, consisting of: manuel neck change tool, screw M3x10 (6 pcs.), grease, silicon free (10g), fuse incl. housing		961.0226
	8	Cable assembly cpl. WH, 1.00 m	liquid cooled	964.2119
		Cable assembly cpl. WH, 1.20 m	liquid cooled	964.2120
		Cable assembly cpl. WH, 1.50 m	liquid cooled	964.2121
		Cable assembly cpl. WH, 2.00 m	liquid cooled	964.2122
		Cable assembly cpl. WH, 2.50 m	liquid cooled	964.2123
		Cable assembly cpl. WH, 3.00 m	liquid cooled	964.2124
	8.1	Cable assembly cpl. WHPP, 2.00 m	liquid cooled	964.3122
		Cable assembly cpl. WHPP, 3.00 m	liquid cooled	964.3124
		Cable assembly cpl. WHPP, 4.00 m	liquid cooled	964.3125
	9.1	Collet for core liner, Ø 4.0 mm	20 pcs.	131.0001
	9.2	Nut M10x1	10 pcs.	501.0082
		O-ring Ø 3.5 x 1.5 mm	20 pcs.	165.0008
	9.3	Drive Roll for Ø 0.8 mm alu. wire		961.0017
		Drive Roll for Ø 1.0 mm alu. wire		961.0018
		Drive Roll for Ø 1.2 mm alu. wire		961.0019
		Universal Drive Roll for Ø 0.6 mm		961.0268
		Universal Drive Roll for Ø 0.8 mm		961.0269
		Universal Drive Roll for Ø 0.9 mm		961.0270
		Universal Drive Roll for Ø 1.0 mm		961.0227
		Universal Drive Roll for Ø 1.2 mm		961.0228
	9.4	Inlet guide insulated		961.0238
	9.6	Pressure roll cpl.		961.0010
	9.7	Outlet guide insulated		960.0151
<b>Guide spiral liner / core liner</b>	9	Guide spiral liner blank 1.5/4.0 with collet	for 3.00 m	122.0005
		Guide spiral liner blank 1.5/4.0 with collet	for 5.00 m	122.0009
		Guide spiral liner blank 2.0/4.5 with collet	for 3.00 m	122.0031
		Guide spiral liner blank 2.0/4.5 with collet	for 5.00 m	122.0039
		Teflon core liner 1.5/4.0 blue with collet and o-ring	for 3.00 m	126.0005
		Teflon core liner 1.5/4.0 blue with collet and o-ring	for 5.00 m	126.0011
		Teflon core liner 2.0/4.0 red with collet and o-ring	for 3.00 m	126.0021
		Teflon core liner 2.0/4.0 red with collet and o-ring	for 5.00 m	126.0028
		Carbon Teflon core liner 1.5/4.0 with collet and o-ring	for 3.00 m	127.0002
		Carbon Teflon core liner 1.5/4.0 with collet and o-ring	for 5.00 m	127.0004
		Carbon Teflon core liner 2.0/4.0 with collet and o-ring	for 3.00 m	127.0005
		Carbon Teflon core liner 2.0/4.0 with collet and o-ring	for 5.00 m	127.0008
		Polyamid core liner 2.0/4.0 with collet and o-ring	for 3.00 m	128.0012
		Polyamid core liner 2.0/4.0 with collet and o-ring	for 5.00 m	128.0016

Build group	Pos.	Description	Specifications	Order-no.
Accessories	9.8	Cable hanger		191.0039
		w/o. fig. Alignment jig WH 241 D		837.0020
		Programming tip M6; TCP 15 mm		837.0107
		Spanner	10 pcs.	191.0001
		Sharpener for plastic liner		191.0064
		Hose cutter		191.0062
		Blades for hose cutter		191.0063

### Order information

We recommend that with the initial order for each cable assembly, two torch necks are purchased. Only with a spare neck can downtime associated with consummable servicing be kept to a minimum. It is also advisable to check each neck in the appropriate alignment jig before use.

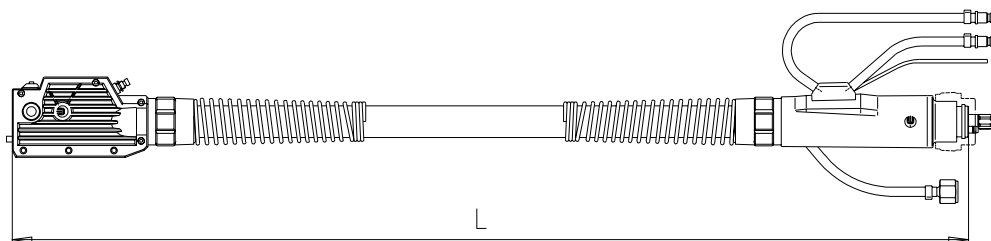
Control cable is supplied without connector, wire inching is realized by the 10-pol control cable.

When ordering ROBO WH 241 D or ROBO WHPP 241 D, please specify:

- wire type
- wire diameter
- length of cable assembly

Additional declaration for ROBO WHPP 241 D:

- details of wire feeder
- manufacturer
- date of construction
- type
- special features



Overall length L=3.15 m, with 3.0 m ROBO WH cable assembly

Overall length L=3.20 m, with 3.0 m ROBO WHPP cable assembly

### Attaching the cable assembly to the robot

To ensure that the cable assembly is securely attached to the robot, please use the BINZEL ATS-CAT torch mount with suitable extensions and brackets to meet your TCP requirements.

Welding & cutting brought to the point.



Alexander Binzel Schweisstechnik GmbH & Co. KG  
P.O. Box 10 01 53 · D-35331 Giessen  
Tel.: ++49 (0) 64 08 / 59-0  
Fax: ++49 (0) 64 08 / 59-194  
Internet: [www.binzel-abicor.com](http://www.binzel-abicor.com)